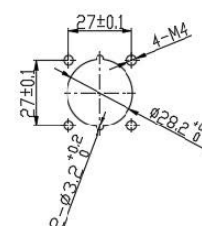
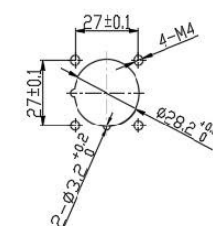
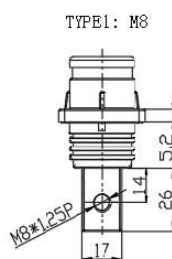
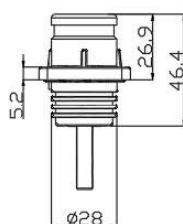
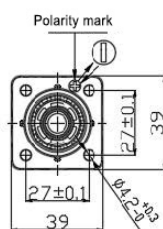
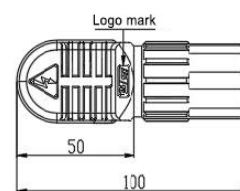
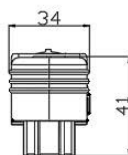
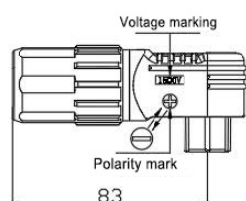

**Product model**
**GC-GCS12-SW01/02-M8**
**产品特点Characteristic**

插头 Plug	弯头结构, 360°自由旋转, 便于多方位出线 Rectangular structure, 360° free rotation, easy to multi-directional line
插座 Receptacle	抗电弧和防水设计 Arc resistant and waterproof design
连接 Connection	采用扭簧冠体连接技术 Crown spring connection technique
松脱 Loose	侧压式一键松脱 Side press one key release
保护 Protection	防触指防误插, 功能保护 Anti-contact finger protection against misinsertion
颜色 Color	具有正负极橙、红、黑颜色防错识别 With polarity color error - proof recognition

**技术参数Parameter**

材质 Material	PA66/T2Y pure copper with silver plating	芯数 Number of cores	Single core
额定电流 Rated current	250A/300A/350A	额定电压 Rated voltage	1500V DC
接触电阻 Contact resistance	≤0.5mΩ (100mA)	绝缘阻抗 Insulation resistance	>500MΩ
插拔力 Plugging force	≤75N	介电强度 Dielectric strength	4000V AC
插拔次数 Number of mating cycles	500 times	防护等级 Degree of protection	IP67\UL94 V-0
适配线径 Applicable cables	70mm <sup>2</sup> / 95mm <sup>2</sup> / 120mm <sup>2</sup>	工作温度 Operating temperature	-40 ~ 125°C

**产品尺寸Dimension**


Positive mounting panel (Orange/Red) Negative mounting panel (Black)